

FITTING INSTRUCTIONS

VEHICLE Toyota Land Cruiser 76/78/79"
PRODUCT Rear Locker Guard
PN# SB059
NOTE Ensure Vehicle is on level ground
Chock front wheels to avoid vehicle rolling

PAGE 1

1. Remove the (3) original hardware and remove original guard.
See figure 1

2. Remove white plug from bracket.

3. Fit Blackhawk locker guard.
a. Re-use the 2 nuts previously removed
b. Fit supplied M8 bolt
c. Clip wiring plug into upper hole, as highlighted in *figure 2*

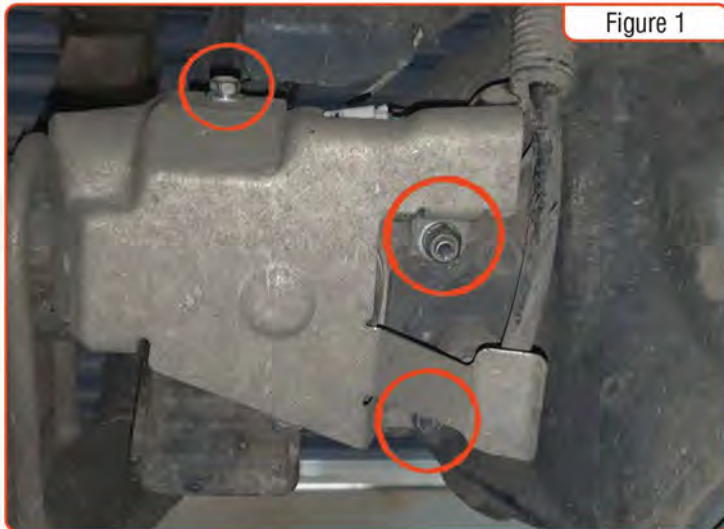


Figure 1

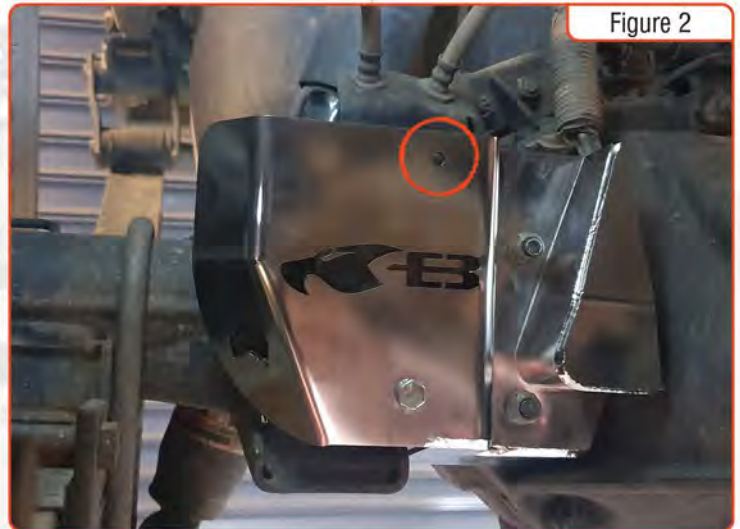


Figure 2

TOOLS REQUIRED TO COMPLETE FITMENT

- 12mm, 13mm and 14mm sockets

